



# ET25K(X) HT25KX



**ELECTRIC-HYDRAULIC  
or FULLY HYDRAULIC  
25,000 FT-LB CRANE**

## FEATURES

- ◆ 5,000 lb Maximum Lifting Capacity
- ◆ 25,000 ft-lb Moment Rating
- ◆ Electric-Hydraulic (ET) or Fully Hydraulic (HT)
- ◆ Power Rotation
- ◆ Meets ANSI B30.5 Safety Standards
- ◆ Meets OSHA 1910.180 Requirements

## ET25K & ET25KX

- ◆ Boom Length 10-20 ft  
KX: Hydraulic extension 10-16 ft and Manual ext. 16-20 ft  
K: Manual extension 10-20 ft
- ◆ High-efficiency Electric Planetary Winch
- ◆ Continuous Power Rotation
- ◆ Load-Holding Counterbalance Valves on all Cylinders
- ◆ Remote Control Pendant: 25 ft Cord and Quick Disconnect

## HT25KX

- ◆ Boom Length 10-20 ft  
KX: Hydraulic extension 10-16 ft and Manual ext. 16-20 ft
- ◆ High-efficiency Hydraulic Planetary Winch: 55 ft/min (5 gpm)
- ◆ 400° Power Rotation
- ◆ Load-Holding Counterbalance Valves on all Cylinders
- ◆ Remote Control Pendant: 25 ft Cord and Quick Disconnect
- ◆ Hydraulic requirements  
Standard: 2 GPM at 3000 psi, 4 gal reservoir  
Proportional: 4 GPM at 3000 psi, 8 gal reservoir

## MINIMUM REQUIREMENTS

- ◆ 10,500 lb GVWR Chassis
- ◆ Outriggers - Rear
- ◆ PTO, Pump, and Reservoir (HT Only)

LIFTING CAPACITIES	
REACH (FT)	CAPACITY (LBS)
5	5,000
10	2,700
16	1,450
20	1,050

See Back Page for Complete Capacity Chart

## STANDARD EQUIPMENT

- ◆ Capacity Overload Shut-Off System
- ◆ Anti-Two-Blocking System
- ◆ 80 ft of 5/16" Aircraft-Quality Wire Rope
- ◆ Snatch Block with Swivel Hook and Safety Latch
- ◆ Master Disconnect Switch (ET)
- ◆ Battery Cable: 25 ft (ET)

## OPTIONAL EQUIPMENT

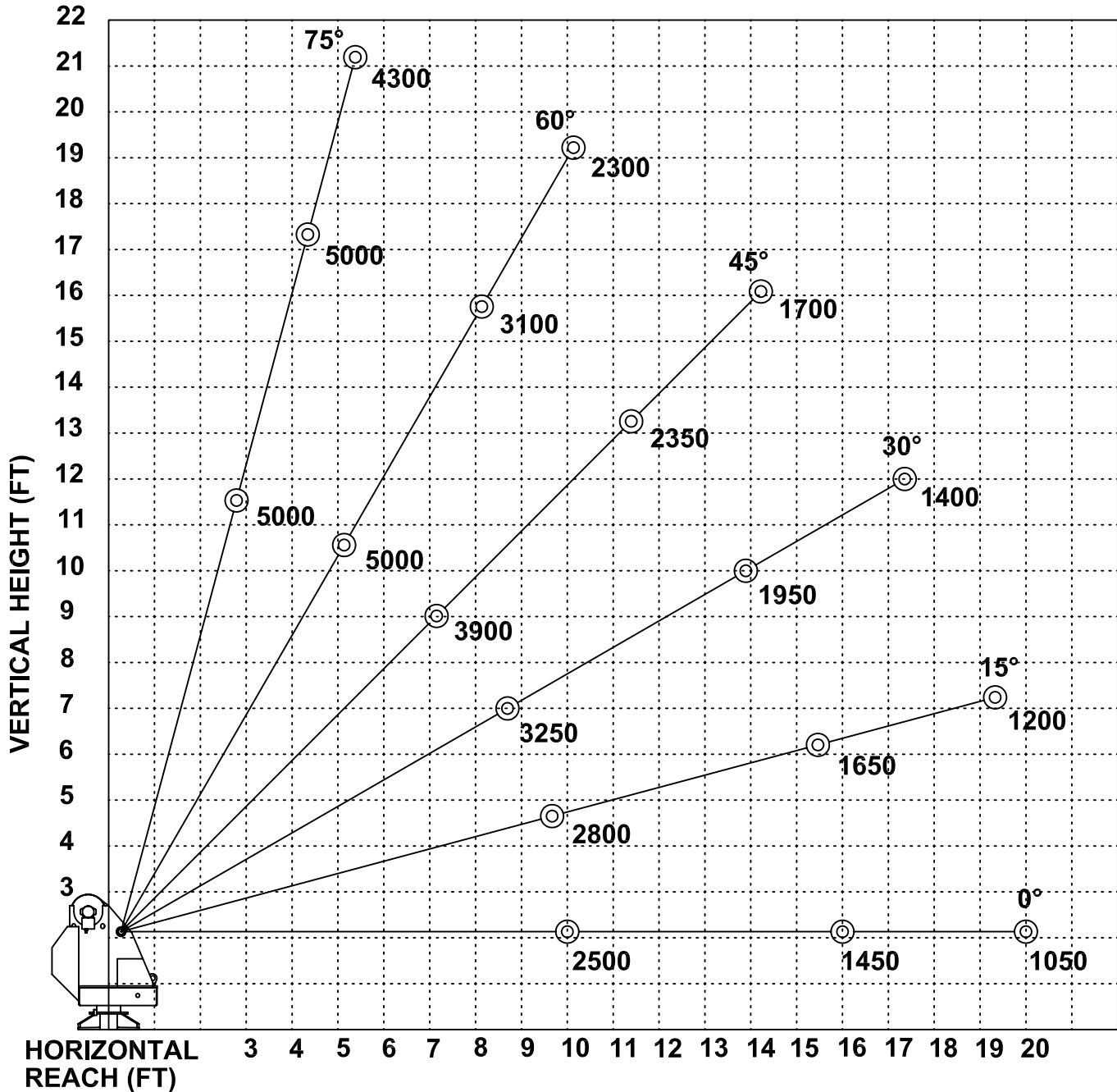
- ◆ Radio Remote Controls
- ◆ Hydraulic and Manual Outrigger Packages
- ◆ Hydraulic Pumps and Reservoirs
- ◆ Mounting Pedestal for Platform Bodies
- ◆ Boom Rests



12110 BEST PLACE  
CINCINNATI OH 45241  
8 0 0 . 2 2 6 . 2 2 3 8  
FAX 513.326.5427  
www.venturo.com

Specifications subject to change without notice.

## ET/HT25K(X) - 10-16-20 BOOM MAXIMUM CAPACITY CHART



**MUST USE SNATCH BLOCK  
FOR LOADS OF 2500 LBS.  
AND GREATER**